

# Heavy Weather Decision Support Systems

## Operator training course



Tel. : +47 73 56 14 00  
 Fax: + 47 73 56 14 20  
 E-mail: shipsim@smc.no  
 Web: www.smc.no

Ship Manoeuvring Simulator Centre AS



This course is based on **AMARCON's** OCTOPUS onboard decision support system. It is connected to **MIROS'Wavex** onboard marine radar extractor, **LIGHT STRUCTURES** onboard hull monitoring system and **METEOCONSULT SPOS** onboard weather advisory system.

The Heavy Weather Decision Support operator training course will enable masters and officers to make the best decisions about safe and effective ship operation.

### COURSE CONTENT

Participants will be trained in use of the equipment as a tool for:

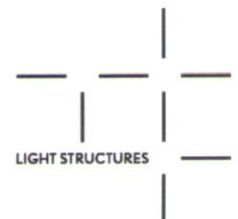
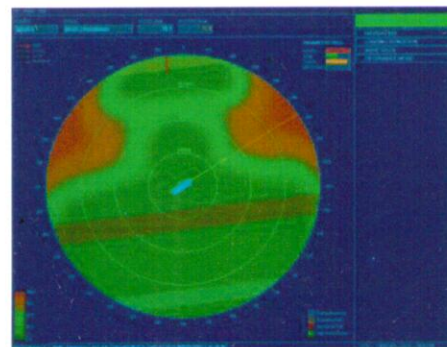
- The monitoring system providing an immediate overview of the ship's actual and attainable performance in waves.
- The forecast system providing vessel performance predictions, weather windows, downtime warnings and simulation features.
- The routing system providing detailed voyage evaluations and optimisations taking into account the ship-specific behaviour in waves.
- The decision support system as an objective assistant to safe navigation and resonance avoidance.
- Sessions on the theory of elements like basic wave theory, stability and an explanation of the terms used for the equipment will be presented.
- Exercises to become familiar with the equipment will be carried out on the classroom OCTOPUS simulator.
- Exercises on the full-scale simulator will demonstrate the Decision Support System in heavy weather conditions, where the participants will train to avoid excessive hull damage/stress and maintain the vessel's safety.

### COURSE DETAILS

Duration: 3 days

Target groups: masters and officers.

Number of participants: 6



SMS complies with the standards governing the use of simulators as laid down in Section A-I/12 of STCW95. SMS is approved by the Norwegian Maritime Directorate as a simulator-based training centre i.a.w. standards laid down in STCW/95. SMS is approved by the Norwegian Maritime Directorate and The Nautical Institute as a Dynamic Positioning training institution, and as an approved training centre for Maritime Crew Resource Management OAA (IMO). SMS is approved by Statoil as a training centre for offshore loading and offshore crane operations. SMS is qualified in the Achilles Joint Qualification System for suppliers to the Oil Industry in Norway and Denmark.

